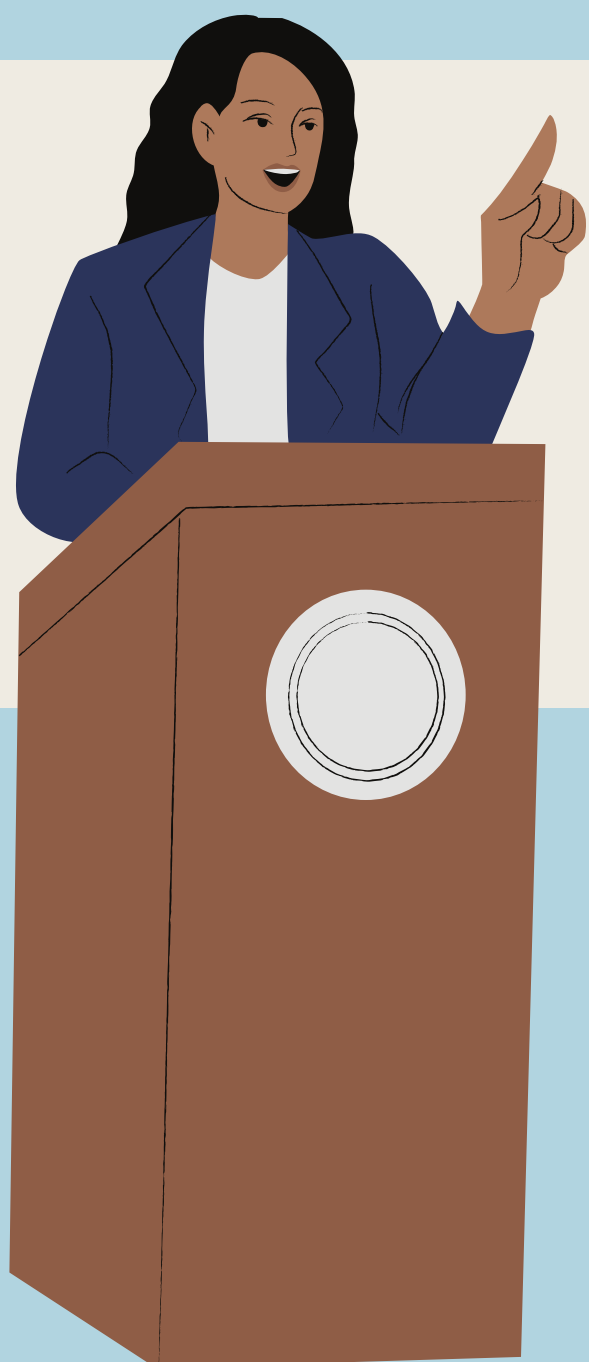




Funded by
the European Union



DIGITAL YOUTH FOR ACTIVE INCLUSIVE SOCIETIES

01.11.2025-10.11.2025

1ST AND 10TH TRAVELING DAYS

LA PADURE PENSION

BREBU, CARAS-SEVERIN, ROMANIA

2025-1-R001-KA151-YOU-000297339



Funded by
the European Union



ABOUT THE PROJECT

THIS PROJECT BRINGS TOGETHER YOUNG PEOPLE FOR AN INTERNATIONAL EXPERIENCE THAT ENCOURAGES PERSONAL GROWTH, BUILDS CONFIDENCE, AND HELPS DEVELOP IMPORTANT LIFE SKILLS. THROUGH WORKSHOPS, DISCUSSIONS, AND CULTURAL EXCHANGE, PARTICIPANTS WILL EXPLORE TOPICS LIKE INCLUSION, AND ACTIVE CITIZENSHIP. THE PROJECT AIMS TO INSPIRE YOUNG PEOPLE TO GET INVOLVED IN THEIR COMMUNITIES, UNDERSTAND THEIR RIGHTS, AND BECOME MORE ENGAGED, RESPONSIBLE MEMBERS OF SOCIETY, BOTH LOCALLY AND ACROSS EUROPE.



OBJECTIVES



Funded by
the European Union

- **INCREASE YOUNG PEOPLE'S AWARENESS OF THEIR ROLE AS ACTIVE CITIZENS BY EXPLORING DEMOCRATIC VALUES, HUMAN RIGHTS, AND THE IMPORTANCE OF PARTICIPATION IN THEIR COMMUNITIES.**
- **ENCOURAGE MEANINGFUL YOUTH INVOLVEMENT IN CIVIC LIFE THROUGH INTERACTIVE ACTIVITIES THAT BUILD CONFIDENCE, CRITICAL THINKING, AND MOTIVATION TO ENGAGE IN LOCAL AND INTERNATIONAL INITIATIVES.**
- **FOSTER INTERCULTURAL DIALOGUE AND COOPERATION AMONG PARTICIPANTS FROM DIFFERENT BACKGROUNDS TO PROMOTE MUTUAL UNDERSTANDING, TOLERANCE, AND SHARED RESPONSIBILITY IN SHAPING INCLUSIVE SOCIETIES.**





WORKING METHODS

IN THIS PROJECT WE WILL USE NON-FORMAL EDUCATION METHODS THAT MAKE LEARNING ACTIVE AND ENGAGING. PARTICIPANTS WILL TAKE PART IN BRAINSTORMING, ROLE PLAYS, DEBATES, AND A WORLD CAFÉ TO SHARE IDEAS IN SMALL GROUPS. THERE WILL ALSO BE TEAMWORK AND TEAM-BUILDING EXERCISES TO HELP EVERYONE CONNECT, AS WELL AS EVENTS TO SHARE WHAT WE'VE LEARNED WITH OTHERS. REGULAR MOMENTS FOR REFLECTION AND EVALUATION WILL GIVE PARTICIPANTS SPACE TO LOOK BACK ON THEIR EXPERIENCES.

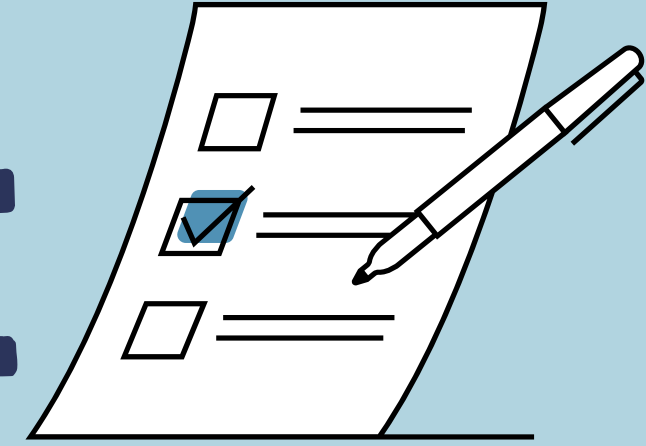
ALL PARTICIPANTS WILL RECEIVE A YOUTHPASS CERTIFICATE! MORE INFORMATION ABOUT YOUTHPASS HERE: WWW.YOUTHPASS.EU





Funded by
the European Union

PARTICIPANTS PROFILE



**6 PARTICIPANTS + 1
TEAM LEADER FROM
EACH PARTICIPATING
COUNTRY**



**AGES: 15-20 (20+
WITHOUT UPPER AGE
LIMIT FOR GROUP
LEADERS)**



Funded by
the European Union

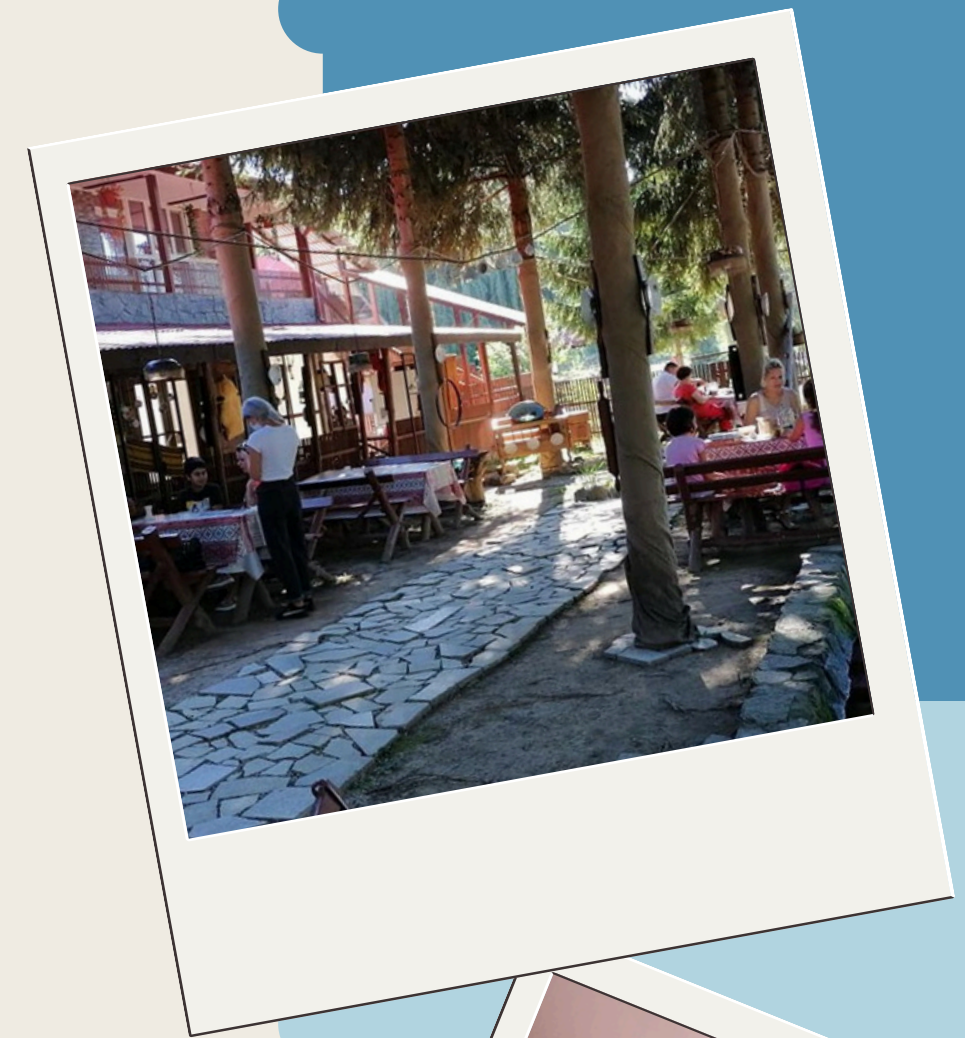
VENUE



THE PARTICIPANTS WILL BE ACCOMMODATED IN "LA PADURE" PENSION IN BREBU VILLAGE NEAR RESITA, CARAS-SEVERIN. THE PARTICIPANTS WILL STAY IN 3 - 4 BED ROOMS WITH THEIR OWN BATHROOM. THE ROOMS WILL BE SHARED INTERCULTURALLY MIXED, BUT SEPARATED BY GENDER.

THE VENUE HAS INTERNET, A VIDEO PROJECTOR, A CONFERENCE ROOM, A DINING ROOM WITH ITS OWN RESTAURANT AND A BIG GREEN YARD. IT IS LOCATED NEAR THE MAIN ROAD BUT SURROUNDED BY FOREST.

CHECK THE PLACE OUT HERE: [HTTPS://WWW.FACEBOOK.COM/LAPADUREINBREBU](https://www.facebook.com/lapadureinbrebu)





Funded by
the European Union



PREPARATION

PLEASE NOTE THAT THERE ARE NO SHOPS AVAILABLE NEAR THE VENUE, SO PARTICIPANTS ARE ENCOURAGED TO BRING ALL NECESSARY ITEMS (HYGIENE PRODUCTS, MEDICINE, HOUSE SHOES) OR PERSONAL NECESSITIES, IN ADVANCE. TOWELS AND BEDSHEETS ARE PROVIDED BY THE VENUE.

CULTURAL NIGHTS: PARTICIPANTS ARE EXPECTED TO BRING CULTURAL ITEMS OR TRADITIONAL FOOD FROM THEIR HOME COUNTRY TO CONTRIBUTE TO THE CULTURAL NIGHT THEY WILL BE ORGANIZING. EACH EVENING WILL FEATURE A DIFFERENT CULTURAL PRESENTATION.

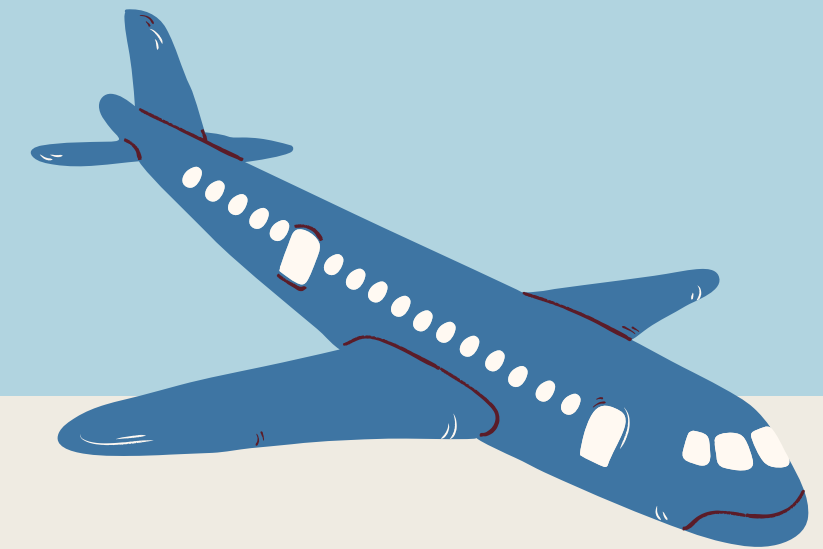
TRAVEL

- THE CLOSEST AIRPORT IS IN TIMISOARA, 120 KM FROM THE VENUE.
- FROM THERE YOU TAKE THE E4B BUS TO NORTH RAIL STATION,
- THEN ANOTHER TRAIN TO CARANSEBES.
- THE TICKETS CAN BE BOUGHT IN THE TRAIN STATION WITH CASH OR ONLINE HERE: [HTTPS://MERSULTRENURILOR.INFOFER.RO/EN-GB/ITINERARIES](https://mersultrenurilor.infofer.ro/en-gb/itineraries)

THERE IS NO DIRECT PUBLIC TRANSPORTATION TO THE VENUE. THE BEST OPTION IS TO TRAVEL FROM TIMIȘOARA TO CARANSEBES. FROM CARANSEBES, WE WILL ARRANGE PICK-UPS ACCORDING TO YOUR ARRIVAL TIME. ANOTHER OPTION IS TO ARRIVE IN TIMIȘOARA, FROM WHERE NEVO PARUDIMOS WILL ORGANIZE GROUP PICK-UPS.



Funded by
the European Union





Funded by
the European Union

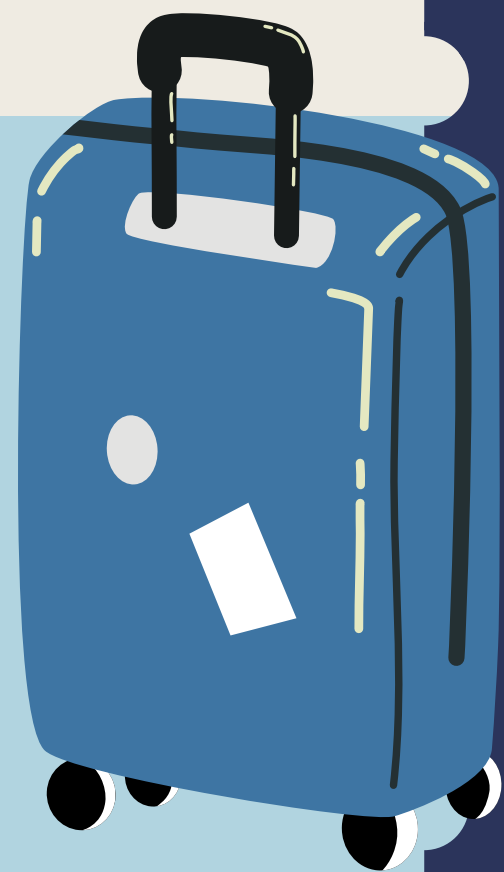
ARRIVALS



MORE DETAILS

IF YOU COME BY CAR, YOU CAN ARRIVE DIRECTLY AT THE VENUE. YOU CAN FIND THE PLACE AND THE COORDINATES ON MAPS: LA PADURE PENSION IN BREBU, CARAS-SEVERIN. PLEASE NOTE THAT YOU MUST BE AT LEAST BE 2 PARTICIPANTS COMING TOGETHER FOR IT TO COUNT AS CARPOOLING (GREEN TRAVEL).

PLEASE CONTACT YOUR SENDING NGO FIRST AND AFTERWARDS US FOR THE FINAL TRAVEL PLAN. WE WILL OFFER ANY ASSISTANCE IF NEEDED!





Funded by
the European Union



BUDGET

THE PROJECT IS FREE OF CHARGE! WE DO NOT TAKE PARTICIPATION FEE FROM PARTICIPANTS IN ANY OF OUR PROJECTS!

ACCOMMODATION, FOOD, AND MATERIALS DURING ACTIVITY DAYS ARE FULLY COVERED BY THE PROJECT. THE TRAVEL REIMBURSEMENT IS BASED ON THE DISTANCE BAND FROM YOUR DEPARTING CITY (NECESSARY FROM THE COUNTRY OF THE SENDING NGO) TO BREBU, CARAS-SEVERIN, ROMANIA. USING EUROPEAN COMMISSION'S DISTANCE CALCULATOR AND THE BUDGETS APPROVED WITHIN ERASMUS+ PROGRAMME!

LINK: [HTTPS://ERASMUS-PLUS.EC.EUROPA.EU/RESOURCES-AND-TOOLS/DISTANCE-CALCULATOR](https://erasmus-plus.ec.europa.eu/resources-and-tools/distance-calculator))

10 - 99 KM - 28 EUR

100 - 499 KM - 211 EUR (GREEN TRAVEL UP TO 285 EUR)

500 - 1999 KM - 309 (GREEN TRAVEL UP TO 417 EUR)

2000 - 2999KM - 395 EUR (GREEN TRAVEL AVAILABLE UP TO 535 EUR)



Funded by
the European Union

USEFUL INFORMATION

WEATHER: NOVEMBER IS COLD IN ROMANIA WITH THE TEMPERATURES VARYING FROM 10-15 DEGREES DURING THE DAY TO 0 OR MINUS DEGREES AT NIGHT SO MAKE SURE TO BRING WARM CLOTHES! CHECK THE WEATHER FORECAST BEFORE ARRIVING TO GET A BETTER IDEA OF THE TEMPERATURE.

DO NOT FORGET TO BRING:

- **ID/PASSPORT**
- **INSURANCE (EHIC OR PRIVATE INSURANCE)**
- **YOUR OWN MEDICINE**



PARTNER COUNTRIES

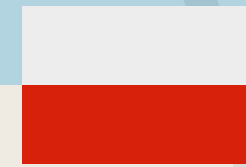


Funded by
the European Union

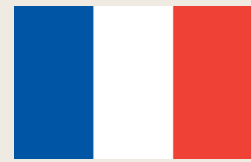
CZECH REPUBLIC



POLAND



FRANCE



NETHERLANDS



HUNGARY



ITALY



ROMANIA



If you have any questions, don't hesitate to contact us at:
nevoparudimos@gmail.com / nevodianatsiklauri23@gmail.com

